

Discover

Children's Story Centre

Venue Hire

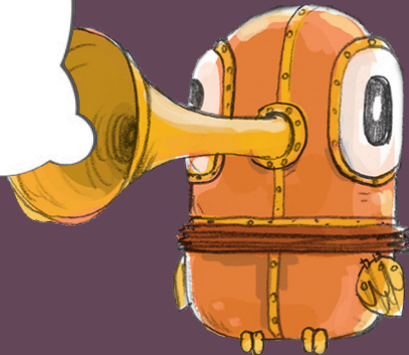
A unique venue for events, meeting and launches...

Discover Children's Story Centre is a place where children and their families can enjoy playing, learning and making up stories together.

The UK's first Story Centre for children aged 0-11 and their families, our mission is to encourage a life-long love of stories. Engaging children with reading, writing and drawing supports their success in learning and communication skills. Stories can also be a great source of pleasure, providing an understanding of ourselves and the wider world.

We work in schools and communities to improve children's literacy, working with nearly 20,000 school children every year. We aim to give away 10,000 of our tickets free to families who might not otherwise be able to visit Discover.

**WE'RE A
REGISTERED
CHARITY - HIRING
OUR SPACES
SUPPORTS OUR
WORK!**



Discover offers a range of versatile rooms for meetings, away days, product and book launches. Our spaces are versatile and affordable.

We are a striking Edwardian building that combines period features with a modern entrance, café and interior. The only venue of its kind, it is sure to evoke the 'wow' factor for any visitor.



Squiggly



Diggly

Named after the home planet of our resident space alien Hootah, our light and flexible meeting rooms can be laid out in a variety of ways to suit your needs. The two rooms are separated by a sliding partition wall and can be combined to create a larger space of 15m x 8m with a capacity of up to 80 people. Ideal for meetings and rehearsals.

Included: Wifi access, full A/V system, flip charts and pens.

Additional: Laptop hire, refreshments, catering (with vegetarian, vegan and gluten-free options as standard).

Free notebooks are provided for all delegates with full day hires.

Location: Second Floor

Dimensions: 7m x 6.5m

Capacity (Boardroom): 25

Capacity (Theatre Style): 50



Location: Second Floor

Dimensions: 8m x 8m

Capacity (Boardroom): 25

Capacity (Theatre Style): 50



Café

Our light and spacious First Floor Café was created in 2016. Designed to draw upon our building's Edwardian history, while including all the modern amenities, it features artwork from illustrators Ed Vere and Sarah Macintyre.

The space can accommodate up to 65 people and we are able to serve refreshments from our café counter including cakes, sandwiches, and hot and cold drinks.

Location: First Floor

Dimensions: 10.5m x 8m

Capacity: 65



Bookshop & Reception

Our Bookshop was voted as one of Time Out's Top Five Children's Bookshops in London in 2016.

This light, bright and colourful space is perfect for book or product launches, and is conveniently located just inside the entrance to our building.

Location: Ground Floor

Dimensions: 15m x 8m

Capacity: 80



Additional Spaces

If you're looking for something extra special, Discover offers a variety of additional spaces to hire on request.

Our First Floor Story World was designed in conjunction with award-winning illustrator Jim Field. Among a myriad of exploratory spaces, it features a cloud-themed seating area perfect for storytelling or presenting to your guests.

Host an event outside in our Story Garden, full of exciting play spaces for children to explore. Slide down a monster's tongue, make music and have adventures in our pirate ship or spacecraft.

Our exhibition space immerses families in the world of their favourite authors. Previous exhibitions include *The Tiger Who Came to Tea*, Julia Donaldson's *A World Inside a Book* and *The Fantastic World of Dr. Seuss*.



Story World

Location: First Floor

Dimensions: 11m x 8.5m

Capacity: 120

Catering: No

Story Garden

Location: Ground Floor

Dimensions: 10m x 13m

Capacity: 100

Catering: Yes



Exhibition

Location: Basement

Dimensions: 17m x 8m

Capacity: 60

Catering: No

Facilities & Pricing

Access:

Discover is a multi-sensory centre suitable for anyone with visual or hearing impairments. There is step-free access from Stratford High Street (DLR), ramp access for wheelchairs or buggies and a lift serving each floor. There is an accessible toilet on every level, and our ground floor accessible toilet is equipped with a height-adjustable changing bench and ceiling track hoist system.

Equipment:

Wifi, full A/V system, flip charts and pens are available. Free notebooks are provided for all delegates with full day hires. Laptops can be hired for an additional fee.

Refreshments:

Discover is able to provide a selection of hot drinks and biscuits, or freshly baked cakes from our on site cafe. We are also able to provide more extensive catering with vegetarian, vegan and gluten free options as standard.

Booking:

To book a room or to discuss your event please call us on 020 8536 5552 (Mon-Fri 10am-5pm) or email hires@discover.org.uk

Room	Dimensions	Capacity (Board Room)	Capacity (Theatre)	Commercial Rate (incl. VAT)	Charity Rate (incl. VAT)
Squiggly	7m x 6.5m	25	50	£60 per hour	£50 per hour
Diggly	8m x 8m	25	50	£60 per hour	£50 per hour
Squiggly Diggly	15m x 8m	45	80	£120 per hour	£100 per hour
Café	10.5m x 8m	35	65	Price available upon request	
Bookshop	15m x 8m	N/A	80		
Story World	11m x 8.5m	N/A	120		
Story Garden	10m x 13m	N/A	100		
Exhibition Studio	17m x 8m	N/A	60		

A selection of hot drinks & biscuits

£2.50 per head (half day)
£4.50 per head (full day)

Buffet catering

£7.95 per head

A deposit of £50 is required within one week of making your reservation. The remaining fees must be paid at least three weeks prior to the hire date.

Please note, there will be additional costs if event takes place out of hours 10am - 5pm (available on request).

Discover Children's Story Centre

383-387 High Street
Stratford
E15 4QZ

020 8536 5552
hires@discover.org.uk
www.discover.org.uk

Discover is a registered charity number 1070468.



Supported using public funding by
**ARTS COUNCIL
ENGLAND**