

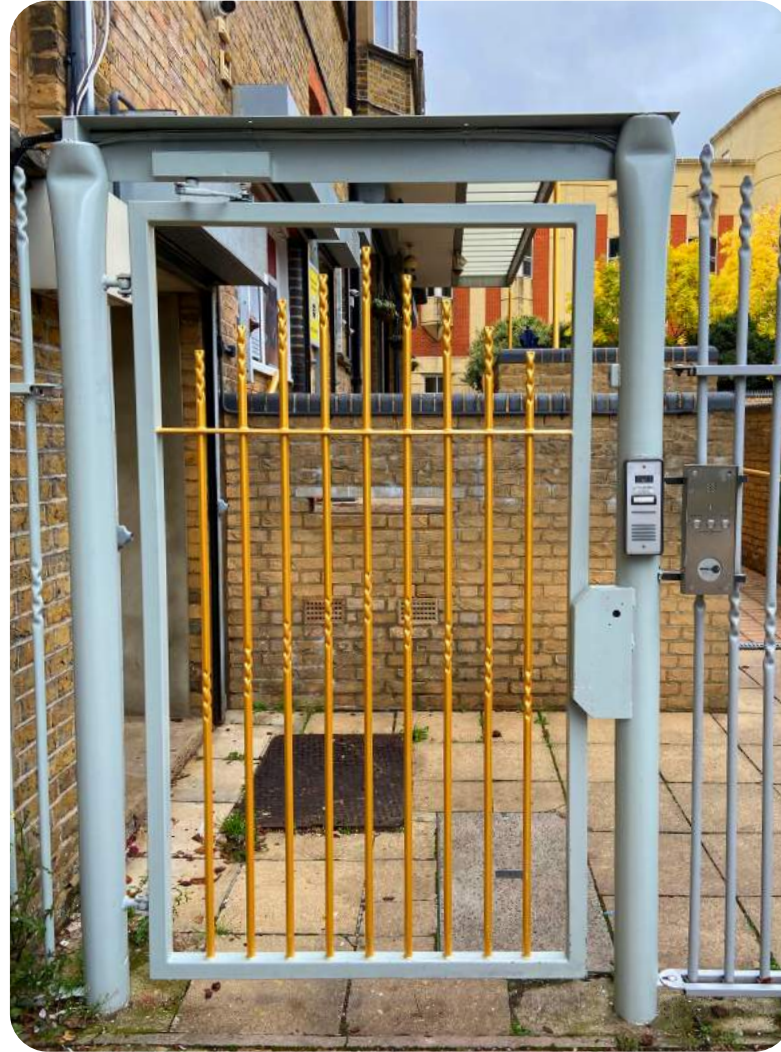


**This is Discover Children's Story Centre.**



**This is the front entrance.**





**This is the back gate.**



**This is the front desk.**

You can ask for craft materials to make a puppet spoon here.



**This is Hootah.  
He is Discover's resident Alien.**





**This is the bookshop.**



**This is where people can leave  
their pushchairs.**

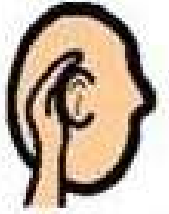
**If you are visiting Discover's Story World with a schools group you will be exploring the first floor Story World.**

**Please skip to page 20.**





**This is the entrance to the  
ground floor Story World.**



**This is what it looks like inside.**

You can hear lots of birds which are being played on a recording through a speaker system.



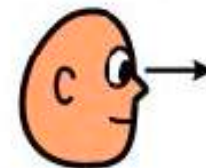
## Hootah's Story Sorting Office



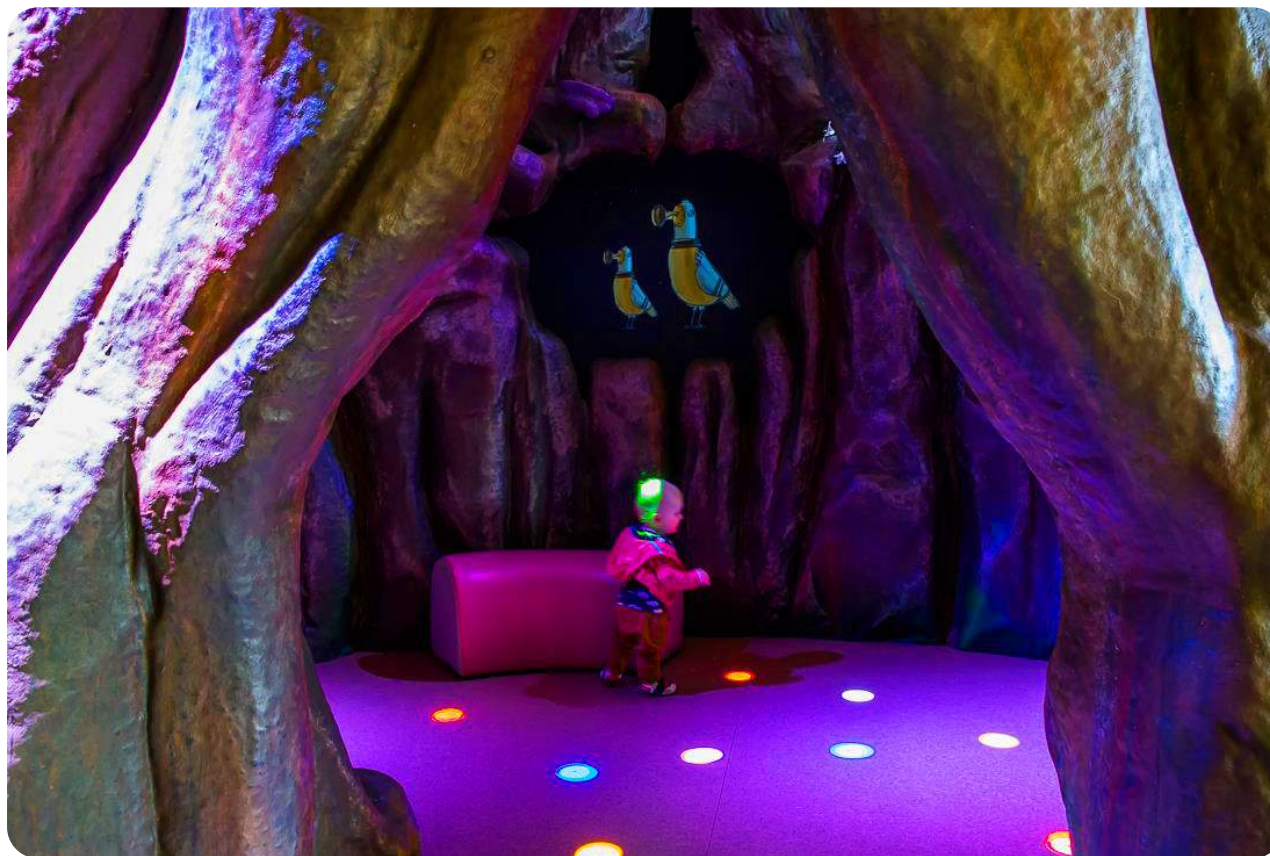
**This is Hootah's Story Sorting Office.**



look



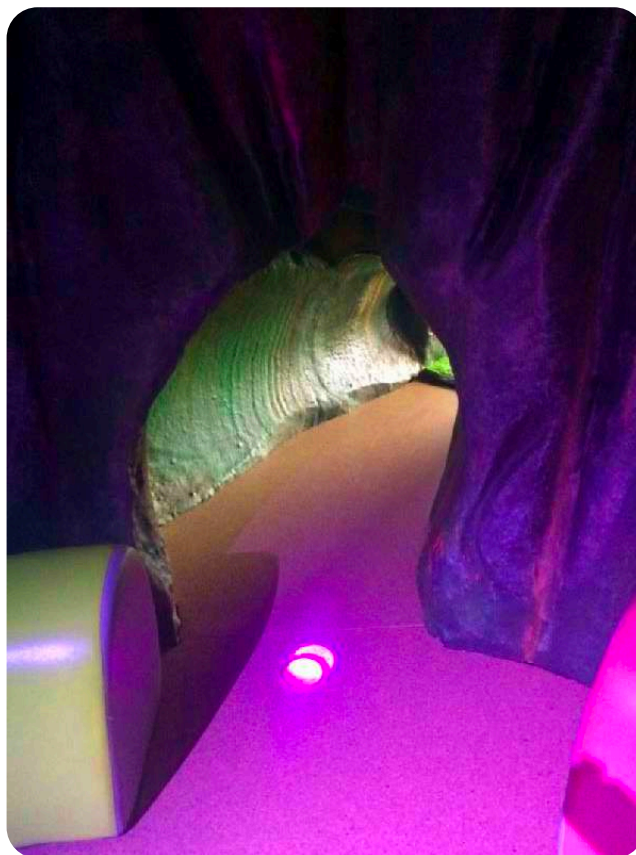
**This is the waterfall,  
you can look in the mirrors.**



## This is Hootah's Hollow.

There are coloured lights on the floor inside. They make a sound when you put your hand or foot on them.





**There is a tunnel to crawl through  
and a grassy hill to climb.**



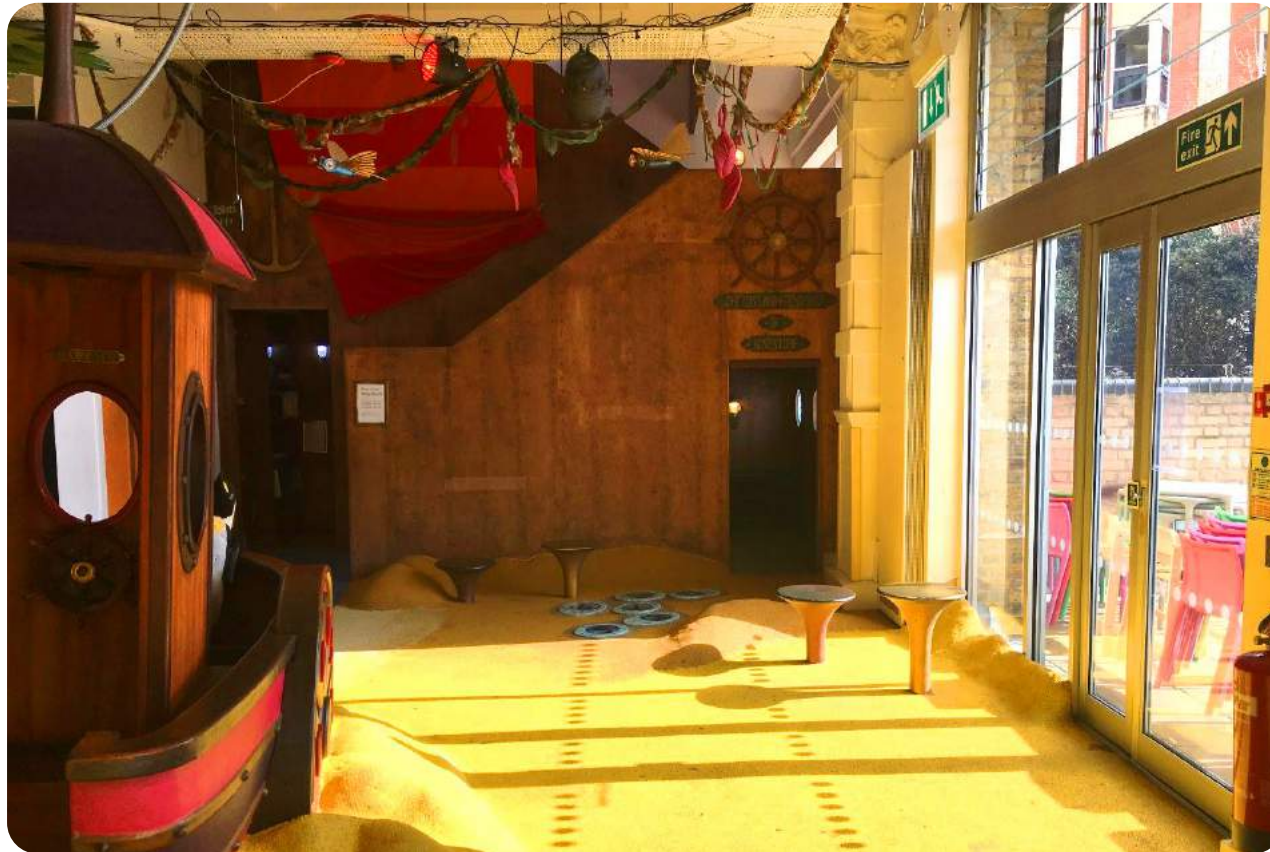


**This is the puppet castle theatre.**



**This is Hootah's Boat.**





**This is a beach area where you can read.**





**This is where you can make  
a spoon puppet.**

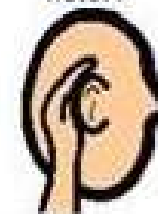


**This is the Lost and Found Ship of  
Adventure.**



**You can go up the stairs or in the lift to  
the first floor Story World.**





**This is what it looks like inside.**

You might hear some sound effects on  
first floor of Story World.

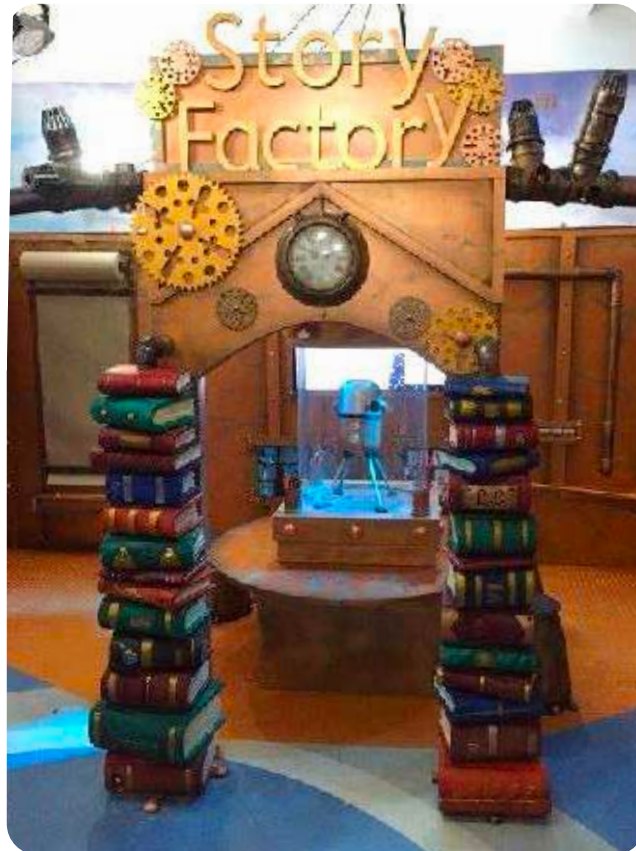


**This is the Lollipop.**



**This is the sky platform and slide.**





**This is the Story Factory.**



**This is the lightbox station.**





**This is the cloud seating area.**





**This is the crow's nest.**

There are books to choose from.



**This is the rocket.**

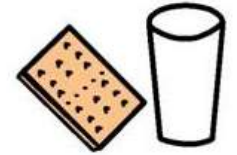


toilet



**You can find the toilets through  
the orange doors.**





**This is Discover's Monster café.**



**This is the Story Garden.**

**To find out more how the building  
has changed in line with Covid-19  
guidelines, find information and a video  
via the link below:**

**[discover.org.uk/coronavirus-policy](https://discover.org.uk/coronavirus-policy)**