

# Discover

Children's Story Centre

Venue Hire

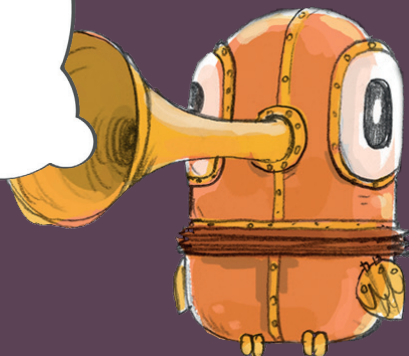
# A unique venue for events, meeting and launches...

Discover Children's Story Centre is a place where children and their families can enjoy playing, learning and making up stories together.

The UK's first Story Centre for children aged 0-11 and their families, our mission is to encourage a life-long love of stories. Engaging children with reading, writing and drawing supports their success in learning and communication skills. Stories can also be a great source of pleasure, providing an understanding of ourselves and the wider world.

We work in schools and communities to improve children's literacy, working with nearly 20,000 school children every year. We aim to give away 10,000 of our tickets free to families who might not otherwise be able to visit Discover.

**WE'RE A  
REGISTERED  
CHARITY - HIRING  
OUR SPACES  
SUPPORTS OUR  
WORK!**





Discover offers a range of versatile rooms for meetings, away days, product and book launches. Our spaces are versatile and affordable.

We are a striking Edwardian building that combines period features with a modern entrance, café and interior. The only venue of its kind, it is sure to evoke the 'wow' factor for any visitor.



## Meeting Room One

Ideal for meetings or rehearsals, our light and flexible meeting rooms can be laid out in a variety of ways to suit your needs.

The two rooms are separated by a sliding partition wall and can be combined to create a larger space of 15m x 8m with a capacity of up to 80 people.

**Location:** Second Floor

**Dimensions:** 7m x 6.5m

**Capacity (Boardroom):** 25

**Capacity (Theatre Style):** 50







## Meeting Room Two

**Included:** Wifi access, full A/V system, flip charts and pens.

**Additional:** Laptop hire, refreshments, catering (with vegetarian, vegan and gluten-free options as standard).

Free notebooks are provided for all delegates with full day hires.



**Location:** Second Floor

**Dimensions:** 8m x 8m

**Capacity (Boardroom):** 25

**Capacity (Theatre Style):** 50



## Café

Our light and spacious First Floor Café was created in 2016. Designed to draw upon our building's Edwardian history, while including all the modern amenities, it features artwork from illustrators Ed Vere and Sarah Macintyre.

The space can accommodate up to 65 people and we are able to serve refreshments from our café counter including cakes, sandwiches, and hot and cold drinks.

**Location:** First Floor

**Dimensions:** 10.5m x 8m

**Capacity:** 65



## Bookshop & Reception

Our Bookshop was voted as one of Time Out's Top Five Children's Bookshops in London in 2016.

This light, bright and colourful space is perfect for book or product launches, and is conveniently located just inside the entrance to our building.

**Location:** Ground Floor

**Dimensions:** 15m x 8m

**Capacity:** 80





## Additional Spaces

If you're looking for something extra special, Discover offers a variety of additional spaces to hire on request.

Our First Floor Story World was designed in conjunction with award-winning illustrator Jim Field. Among a myriad of exploratory spaces, it features a cloud-themed seating area perfect for storytelling or presenting to your guests.

Host an event outside in our Story Garden, full of exciting play spaces for children to explore. Slide down a monster's tongue, make music and have adventures in our pirate ship or spacecraft.

Our exhibition space immerses families in the world of their favourite authors. Previous exhibitions include *The Tiger Who Came to Tea*, Julia Donaldson's *A World Inside a Book* and *The Fantastic World of Dr. Seuss*.





## Story World

**Location:** First Floor

**Dimensions:** 11m x 8.5m

**Capacity:** 120

**Catering:** No

## Story Garden

**Location:** Ground Floor

**Dimensions:** 10m x 13m

**Capacity:** 100

**Catering:** Yes



## Exhibition

**Location:** Basement

**Dimensions:** 17m x 8m

**Capacity:** 60

**Catering:** No

# Facilities & Pricing

## **Access:**

Discover is a multi-sensory centre suitable for anyone with visual or hearing impairments. There is step-free access from Stratford High Street (DLR), ramp access for wheelchairs or buggies and a lift serving each floor. There is an accessible toilet on every level, and our ground floor accessible toilet is equipped with a height-adjustable changing bench and ceiling track hoist system.

## **Equipment:**

Wifi, full A/V system, flip charts and pens are available. Free notebooks are provided for all delegates with full day hires. Laptops can be hired for an additional fee.

## **Refreshments:**

Discover is able to provide a selection of hot drinks and biscuits, or freshly baked cakes from our on site cafe. We are also able to provide more extensive catering with vegetarian, vegan and gluten free options as standard.

## **Booking:**

**To book a room or to discuss your event please call us on  
020 8536 5555 (Mon-Fri 10am-5pm) or email  
[bookings@discover.org.uk](mailto:bookings@discover.org.uk)**

| Room               | Dimensions | Capacity<br>(Board Room) | Capacity<br>(Theatre) | Commercial<br>Rate<br>(incl. VAT) | Charity<br>Rate<br>(incl. VAT) |
|--------------------|------------|--------------------------|-----------------------|-----------------------------------|--------------------------------|
| Meeting Room 1     | 7m x 6.5m  | 25                       | 50                    | £50                               | £40                            |
| Meeting Room 2     | 8m x 8m    | 25                       | 50                    | £50                               | £40                            |
| Meeting Room 1 & 2 | 15m x 8m   | 45                       | 80                    | £100                              | £80                            |
| Café               | 10.5m x 8m | 35                       | 65                    | Price available upon request      |                                |
| Bookshop           | 15m x 8m   | N/A                      | 80                    |                                   |                                |
| Story World        | 11m x 8.5m | N/A                      | 120                   |                                   |                                |
| Story Garden       | 10m x 13m  | N/A                      | 100                   |                                   |                                |
| Exhibition Studio  | 17m x 8m   | N/A                      | 60                    |                                   |                                |

|   |  |
|---|--|
| <b>A selection of hot drinks &amp; biscuits</b> | £2.50 per head (half day)<br>£4.50 per head (full day) |
| <b>Buffet catering</b>                          | £7.95 per head   |

A deposit of £50 is required within one week of making your reservation. The remaining fees must be paid at least three weeks prior to the hire date.

Please note, there will be additional costs if event takes place out of hours 10am - 5pm (available on request).

## **Discover Children's Story Centre**

383-387 High Street  
Stratford  
E15 4QZ

020 8536 5555  
[bookings@discover.org.uk](mailto:bookings@discover.org.uk)  
[www.discover.org.uk](http://www.discover.org.uk)

Discover is a registered charity number 1070468.



Supported using public funding by  
**ARTS COUNCIL  
ENGLAND**